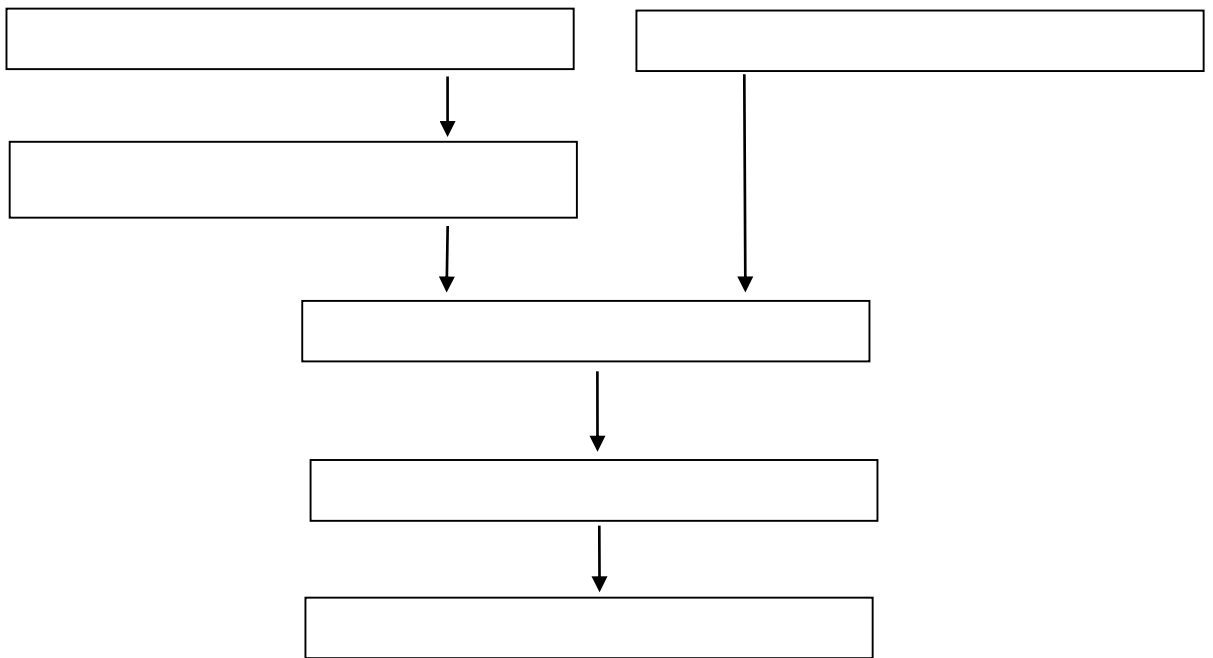


-

50%



	2023 / 2023 12 31	2024 1-3 /2024 3 31
--	------------------------------------	--------------------------------------

	577,160,788.00	491,079,961.85
	222,895,649.49	121,312,964.47
	0	0
	211,921,419.19	110,529,372.12
	0	0
	354,265,138.51	369,766,997.38
	884,366,106.45	184,921,421.45
	-17,331,306.74	694,812.19
	-12,089,133.60	290,050.45

358,269.26
53.72%
162,631.85
24.39%

2024 7 16